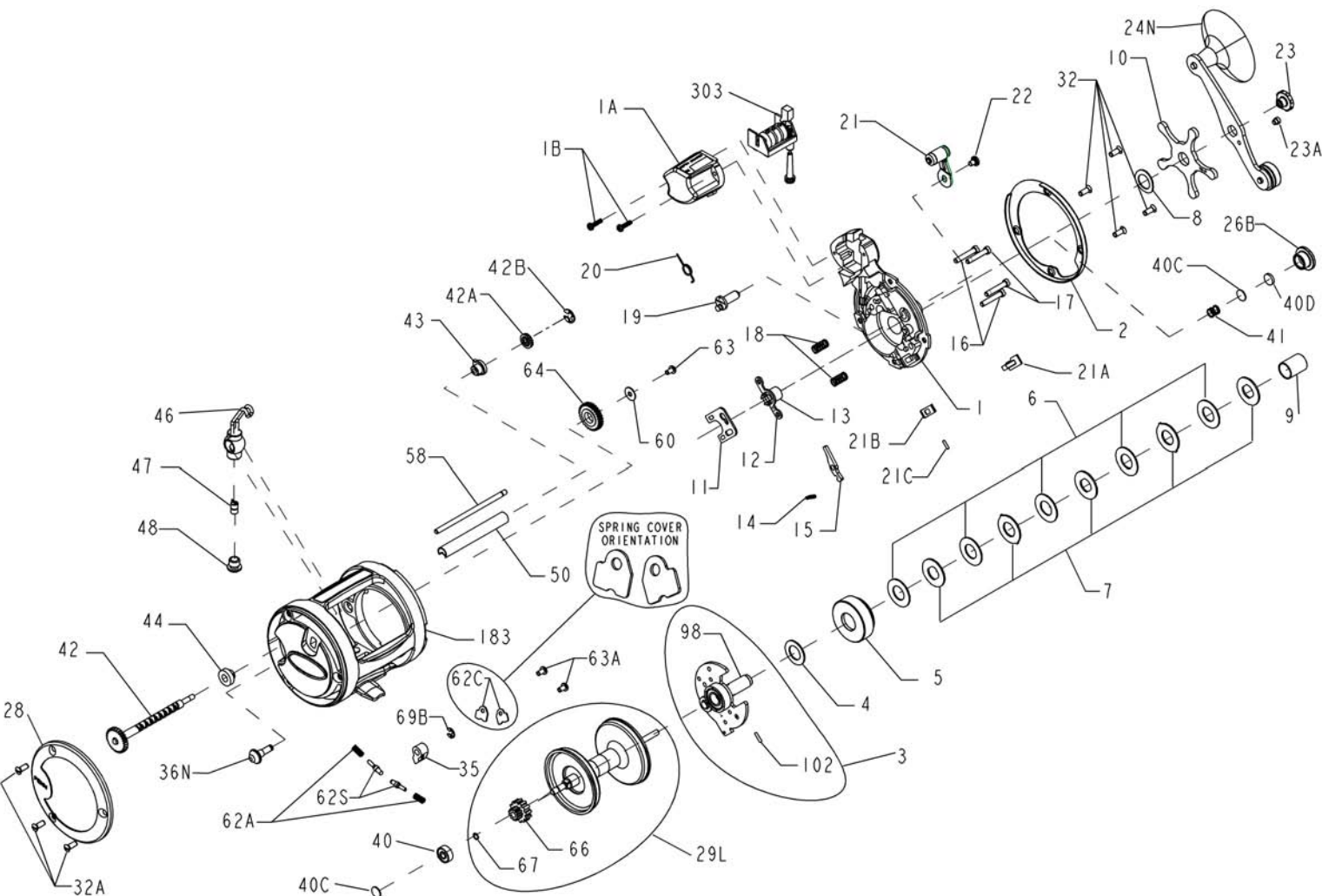




PARTS LIST FOR MODEL 310GT2LC

| <u>KEY NO.</u> | <u>PART NO.</u> | <u>DESCRIPTION</u> |
|----------------|-----------------|-------------------------------|
| 3 | 003B310 | Bridge Assembly |
| 4 | 004 155 | Fiber Washer |
| 5 | 005 310 | Main Gear |
| 6 | 006 060 | Friction Drag Washer (5 req.) |
| 7 | 007C310 | Metal Drag Washer (Set of 5) |
| 8 | 008 310GT2 | Tension Spring |
| 9 | 009 310 | Spacing Sleeve |
| 10 | 010 505 | Star Drag |
| 11 | 011 310 | Eccentric Jack |
| 12 | 012 009 | Pinion Yoke |
| 13 | 013 310 | Pinion Gear |
| 14 | 014 010 | Dog Spring |
| 15 | 015 310 | Dog |
| 16 | 016 310 | Lower Bridge Screw (2 req.) |
| 17 | 017 310 | Upper Bridge Screw (2 req.) |
| 18 | 018 009 | Clutch Spring (2 req.) |
| 19 | 019 310GT2 | Eccentric Cam |
| 20 | 020 109 | Eccentric Spring |
| 21 | 021S310 | Eccentric Lever |
| 21A | 021A310 | Direct Drive Button |
| 21B | 021B310 | Direct Drive Button Spring |
| 21C | 021C310 | Direct Drive Button Pin |
| 22 | 022 310GT2 | Eccentric Screw |
| 23 | 023 060 | Handle Assembly Screw |
| 23A | 110 060 | Handle Lock Screw |
| 24N | 024N310 | Handle Assembly |
| 26B | 026B320 | Spool Tension Control Cap |
| 28 | 028 310GT2 | Left Side Ring |
| 29L | 029L310GT2 | Aluminum Spool |
| 32 | 032 310GT2 | Side Plate Screw (7 req.) |
| 35 | 035 310GT2 | Click Tongue |
| 36 | 036 310 | Click Button |
| 36B | 036 700 | Worm Shaft Nut |
| 40 | 040 320 | Ball Bearing |
| 40C | 040C320 | Metal Thrust Washer (2 req.) |
| 40D | 040D320 | Rubber Thrust Washer |
| 41 | 041 330 | Right Side Thrust Spring |
| 42 | 042 310GT2LC | Worm |
| 42A | 042A310GT2LC | Gear, L.C. Drive |
| 42B | 042B310GT2LC | Retaining Ring, L.C. Drive |
| 43 | 043 330 | Right Side Worm Bearing |
| 44 | 044 330 | Left Side Worm Bearing |
| 46 | 046 310 | Line Guide Carriage |
| 47 | 047 975 | Pawl |
| 48 | 048 330N | Pawl Cover Screw |
| 50 | 050T310 | Worm Shield |
| 58 | 058 310 | Line Guide Post |
| 60 | 060 320 | Idler Gear Washer |
| 62A | 062A310 | Click Spring (2 req.) |
| 62B | 062S310GT2 | Click Pin (2 req.) |
| 62C | 062C321LH | Click Spring Cover (2 req.) |
| 63 | 063 500S | Idler Gear Screw |
| 63A | 063 500S | Click Spring Screw (2 req.) |
| 64 | 064 310GT2 | Idler Gear |
| 66 | 066 310 | Spool Gear Click Ratchet |
| 67 | 067 009 | Spool Gear Lock Ring |
| 69B | 069B600 | Retaining Ring (Click Button) |
| 98 | 098 310 | Gear Sleeve |
| 102 | 102 060 | Sleeve Pin |
| 183 | 183 310GT2LC | Frame |
| 303 | 303 310GT2LC | Counter Wheel Assembly |



| <u>KEY NO.</u> | <u>PART NO.</u> | <u>DESCRIPTION</u> |
|----------------|-----------------|------------------------------------|
| 1 | 001 310GT2LC | Right Side Plate |
| 1A | 001A310GT2LC | Line Counter Cover |
| 1B | 046 430G | Screw, Line Counter Cover (2 req.) |
| 2 | 002 310GT2LC | Right Side Ring |