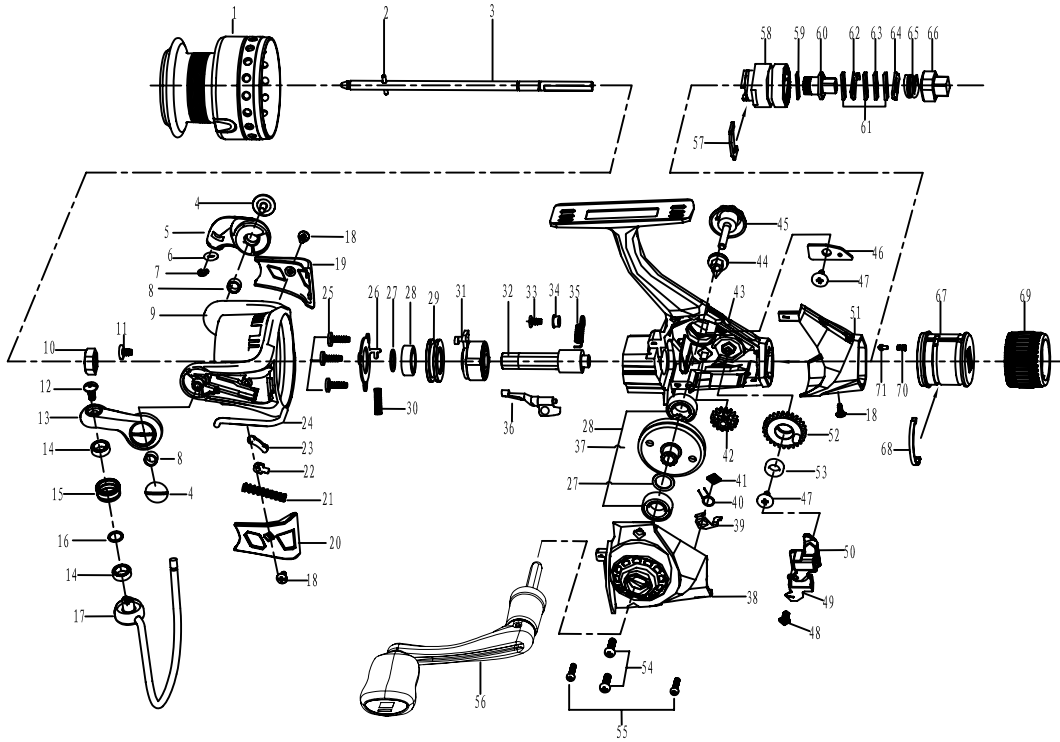


Abu Garcia CARDINAL SX20R/SX30R/SX40R



ABU SP Cardinal SX20R/SX30R/SX40R 00

PARTS LIST OF CARDINAL SX20R/SX30R/SX40R

ITEM#	DESCRIPTION	PART#(SX20R)	PART#(SX30R)	PART#(SX40R)	ITEM#	DESCRIPTION	PART#(SX20R)	PART#(SX30R)	PART#(SX40R)
1	Spool	1302752	1302761	1302770	36	Clutch switch	1280989	1280989	1280989
1	Spare spool	1302753	1302762	1302771	37	Drive gear	1302725	1302725	1302725
2	Bolt	1208221	1208221	1208221	38	Body cover	1302755	1302755	1302773
3	Main shaft	1302724	1302724	1302744	39	Click plate	1208229	1208229	1208229
4	Bail arm screw(2req)	1126379	1126379	1126379	40	Spring	1208230	1208230	1208230
5	Bail holder	1280987	1280987	1280987	41	Washer	1117948	1117948	1117948
6	O-ring	1252708	1252708	1252708	42	Reduction gear	1252732	1252732	1252732
7	E clip	1252707	1252707	1252707	43	Body	1302756	1302765	1302774
8	Bushing(2req)	1188261	1188261	1188261	44	Washer	1092781	1092781	1092781
9	Rotor	1279761	1279771	1279774	45	Handle screw	1279767	1279767	1279767
10	Rotor nut	1085273	1085273	1085273	46	Slider retainer	1126332	1126332	1126332
11	Nut set Screw	1126258	1126258	1126258	47	Screw(2req)	1188428	1188428	1188428
12	Line roller screw	1126261	1126261	1126261	48	Slider screw	1085401	1085401	1085401
13	Bail arm	1280988	1280988	1280988	49	Retainer ring	1101972	1101972	1101972
14	Ball bearing (2req)	1112125	1112125	1112125	50	Slider	1302728	1302728	1302748
15	Line roller	1252705	1252705	1252705	51	Rear cover	1302758	1302767	1302776
16	Washer	1110165	1110165	1110165	52	Oscillation gear	1252730	1252730	1253720
17	Bail assy	1279728	1279744	1279750	53	Bushing	1108938	1108938	1108938
18	Screw(3req)	1125962	1125962	1125962	54	Screw (2req)	1119026	1119026	1119026
19	Bail holder cover	1279763	1279763	1279775	55	Screw (2req)	1117984	1117984	1117984
20	Bail arm cover	1279764	1279764	1279776	56	Handle assy	1279762	1279762	1279762
21	Trip spring	1119106	1119106	1119106	57	Retainer plate	1224008	1224008	1224008
22	Bail slider	1126272	1126272	1126272	58	Drag house	1224009	1224009	1224009
23	Trip linkage	1252713	1252713	1252713	59	Washer	1085405	1085405	1085405
24	Trip bar	1279731	1279745	1279753	60	Drag gear	1101975	1101975	1101975
25	Screw(3req)	1092844	1092844	1092844	61	Washer(3req)	1085407	1085407	1085407
26	Pinion cover	1252715	1252715	1252715	62	Eared washer	1085408	1085408	1085408
27	Washer(2req)	1114764	1114764	1114764	63	Key washer	1085409	1085409	1085409
28	ball bearing (3req)	1252717	1252717	1252717	64	Eared washer	1085410	1085410	1085410
29	Bearing holder	1280475	1280475	1280475	65	Drag spring	1224010	1224010	1224010
30	Clutch spring	1252716	1252716	1252716	66	Click house	1224011	1224011	1224011
31	Clutch assy	1252719	1252719	1252719	67	Drag knob	1302759	1302759	1302759
32	Pinion	1279732	1279732	1279732	68	Ring	1085414	1085414	1085414
33	Screw	1141435	1141435	1141435	69	Plastic ring	1302731	1302731	1302731
34	Bushing	1279733	1279733	1279733	70	Spring	1131609	1131609	1131609
35	Clutch switch spring	1252722	1252722	1252722	71	Click shaft	1131610	1131610	1131610