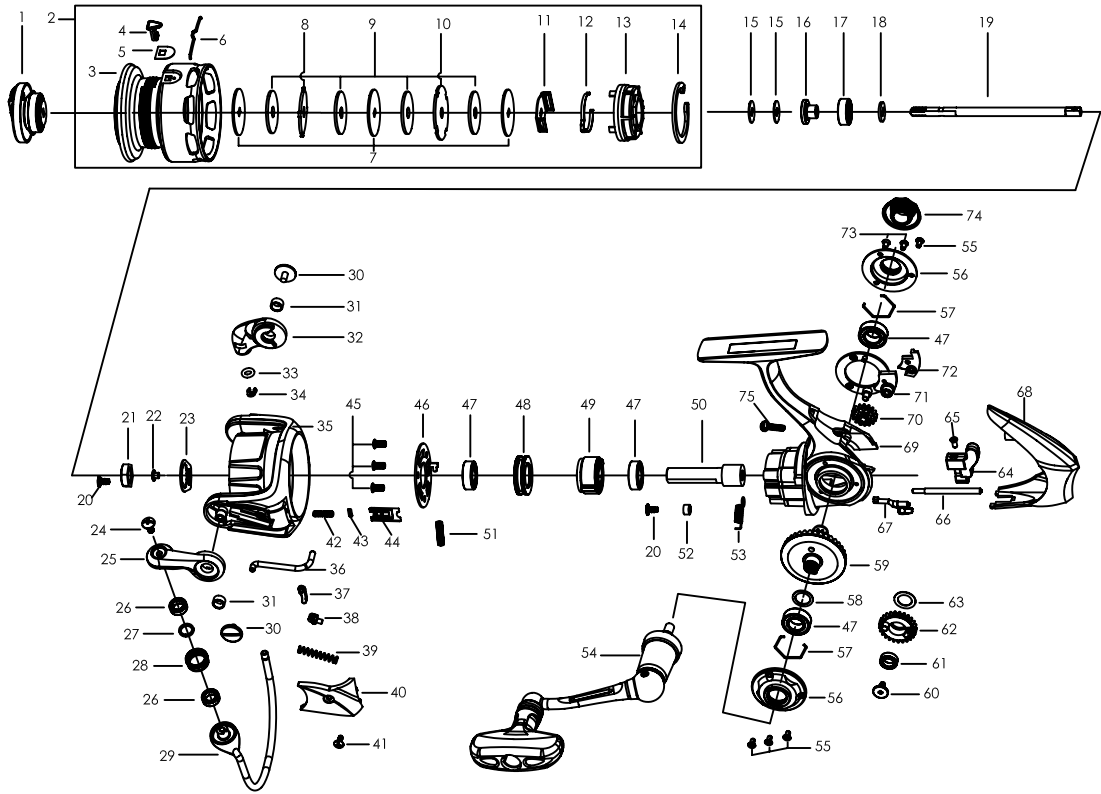




# ORRA2 SX 40



## PARTS LIST OF ORRA2 SX 40

ITEM#	PARTS DESCRIPTION	SX40	ITEM#	PARTS DESCRIPTION	SX40
1	Drag Knob Assembly	1347012	39	Trip Spring	1119106
2	Spool Assembly	1347990	40	Bail Arm Cover	1347993
3	Spool	1347991	41	Screw	1346956
4	Line Clip	1252739	42	Spring	1346982
5	Line Clip Shim	1259476	43	O-Ring	1206550
6	Line Clip Spring	1257318	44	Damper Holder	1346983
7	Keyed Washer(3req)	1252691	45	Screw(3req)	1126326
8	Spool Washer	1126369	46	Pinion Cover	1346984
9	Carbon Washer(4req)	1126368	47	Bearing 7X13X4(4req)	1252717
10	Spool Washer	1256940	48	Bearing Holder	1252718
11	Clicker Holder	1257317	49	Clutch Assembly	1252719
12	Spool Clicker	1256941	50	Pinion	1347981
13	Spool Bottom	1252694	51	Clutch Spring	1252716
14	Retaining Clip	1252696	52	POM Bushing	1279733
15	Spool Shim Thick(2req)	1178953	53	Clutch Switch Spring	1252722
16	Main Shaft Sleeve	1252698	54	Handle Assembly	1347994
17	Plastic Bushing	1252753	55	Screw(4req)	1125961
18	Main Shaft Washer	1252700	56	Body Trim(2req)	1347019
19	Main Shaft	1347966	57	C-Clip(2req)	1252726
20	Rotor Set Screw(2req)	1126258	58	Shim	1347983
21	Rotor Nut	1259462	59	Drive Gear	1346963
22	POM Bushing	1259463	60	Screw	1126275
23	Rotor Set Plate	1346951	61	Bushing	1108938
24	Line Roller Screw	1126261	62	Oscillation Gear	1347984
25	Bail Arm	1347015	63	Washer	1253702
26	Ball Bearing(2req)	1112125	64	Oscillation Slider	1347985
27	Washer	1110165	65	Screw	1126275
28	Line Roller	1252705	66	Oscillation Guide	1346965
29	Bail Assembly	1347967	67	Clutch Switch	1252721
30	Bail Arm Screw(2req)	1126379	68	Body Cover	1347995
31	Bushing(2req)	1188261	69	Gear Box	1347996
32	Bail Holder	1347017	70	Reduction Gear	1346968
33	O-Ring	1252708	71	Gear Holder	1347997
34	E-Clip	1252707	72	Oscillation Cover	1347998
35	Rotor	1347992	73	Screw(2req)	1126084
36	Trip Bar	1347979	74	Dust Cap	1347005
37	Trip Linkage	1252713	75	Screw	1085599
38	Trip Bushing	1126272			